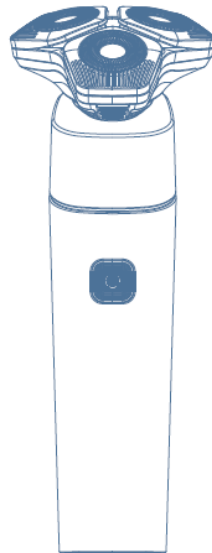


SB325/ HF-T100

**ELECTRIC SHAVER WITH 360 DEGREE FLEXIBLE SHAVING HEAD  
360° ROTARY SHAVER**

**INSTRUCTION MANUAL**



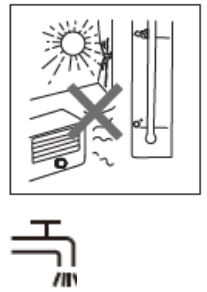
**This appliance can be used by children aged from 8 years and above and by persons with reduced physical, sensory or mental capabilities or lack of experience and knowledge if they have been given supervision or instruction concerning use of the appliance in a safe way and understand the hazards involved. Children shall not play with the appliance. Cleaning and user maintenance shall not be made by children unless they are supervised.**

**Please read the user's manual before using the product and keep it for future reference.**

## I. SAFETY INSTRUCTIONS

When using an electric shaver, basic safety precautions should always be followed, including the following:

1. Use this shaver only for its intended household use as described in this manual.
2. Make sure that the supply voltage corresponds to the voltage marked on the instruction manual in part II: Specifications.
3. Do not reach for an electric shaver in a charging operation that has fallen into water. Unplug immediately.
4. Use the shaver only in dry conditions. Do not use the shaver while bathing or in a shower.
5. Do not place or store a shaver where it can fall or be pulled into a tub or sink. Do not place or drop a shaver into water or other liquid.
6. Always unplug this shaver from the electrical outlet immediately after use, except when shaver is (re)charging.
7. Do not use an adapter not recommended by the manufacturer. Only use with the adapter supplied.
8. Never operate this shaver if it has a damaged adaptor, if it is not working properly, if it has been dropped or damaged, or dropped into water while plugged in.
9. Keep the shaver and adaptor away from heated surfaces.
10. Never drop or insert any object into any opening.
11. Do not charge or plug in the shaver outdoors or operate where aerosol (spray) products are used.
12. Do not charge or place the device in direct sunshine or near a heating system or wet place. Otherwise, troubles may occur.
13. Make sure the USB charging cord and the adaptor does not get wet.
14. This marking indicates that the shaver head can be cleaned under running water.

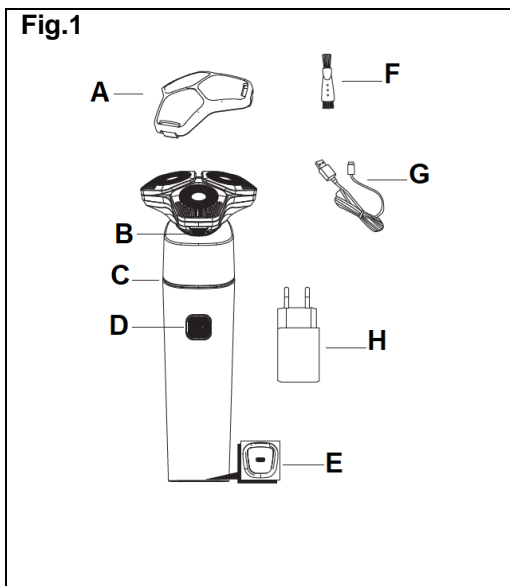


## II. SPECIFICATIONS

- Battery : 1x Lithium battery 600mAh, 5V, 1A
- Adaptor: Input: AC100-240V 50/60Hz 0.2A/ Output: DC5.0V 1000Ma
- Shaver: DC5V, 1.0 A

## III. DESCRIPTION

Fig.1



- A. Protection cap
- B. Button to lift up the click-on shaving head unit
- C. LED indicator charging light
- D. ON/ OFF button
- E. Socket for USB cord ( type C)
- F. Cleaning brush (x1)
- G. USB cable
- H. Adaptor

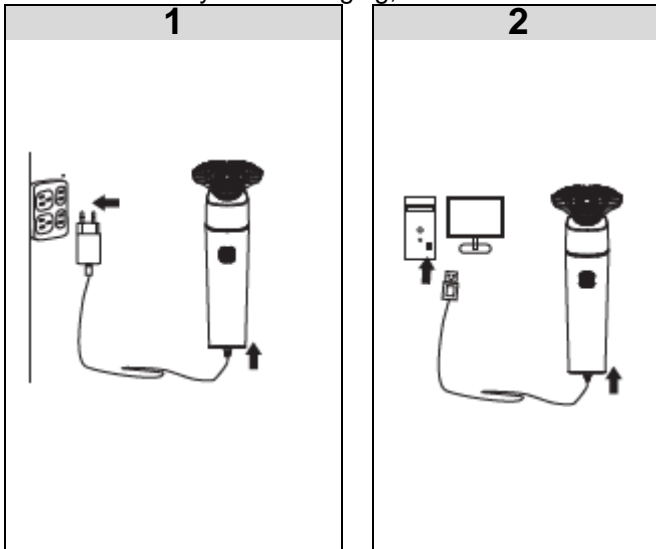
## IV. CHARGING YOUR SHAVER

- For recharging, only use the detachable supply unit provided with this appliance.
- Do not charge the device for more than 10 hours.



The shaver is delivered pre-charged, and is normally ready for use. However if it needs to be recharged, proceed as indicated in the figures below:

There are 2 ways of recharging, as described and illustrated below:



**1) AC charging**

Before charging, make sure the power is off. Connect the USB cord to the USB port of the shaver and adapter. Then plug into mains to recharge. Note: A click is heard when the USB cord is well connected to the device.

**2) USB Charging = Charge by computer or power bank** (It is recommended to use 5V 1A to charge it.)

Connect the USB cord to the USB port of the shaver and the computer USB interface. Note: A click is heard when the USB cord is well connected to the device.

Note: The LED light will be bright and flashing when charging.

Charging time before first use:	<b>90min</b>
Charging time for next uses:	<b>90min</b>
Autonomy after full charge:	<b>90min</b>

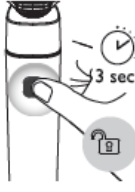

**Notes:**

- To optimize the lifetime of the rechargeable batteries, charge it when the LED indicator flash 3 times and motor stop working. Then fully recharge the battery.
- Once the power cord is damaged. It must be replaced by the manufacturer, after-service center or a similarly qualified technician .

**LOW BATTERY:** The LED light will flash 3 times and the shaver will shut off. Recharge it.

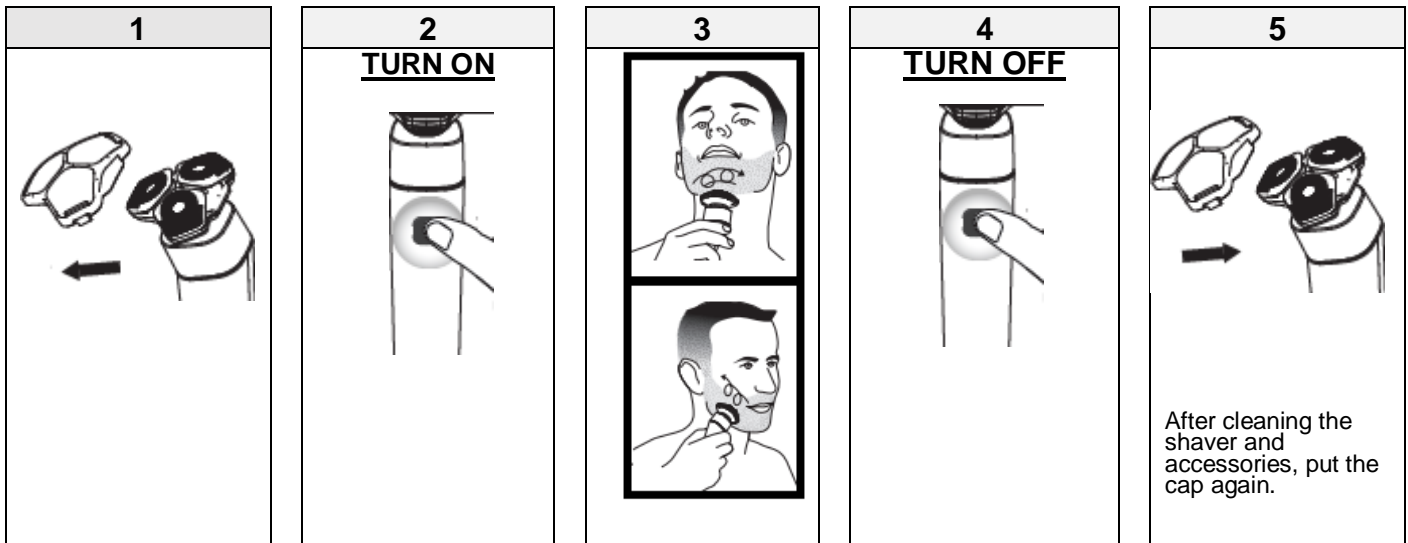
## V. TRAVEL LOCK

You can lock the shaver when you are going to travel. The travel lock prevents the shaver from being switched on by accident.

Activate	Deactivate
 <p>Press the on/off button for 3 seconds to enter the travel lock mode, While you activate the travel lock, the LED indicator will flash for 3 times.</p>	 <p>Press the on/off button for 3 seconds, the LED indicator will flash for 3times. The shaver is now ready for use again.</p>

## VI. HOW TO USE THE SHAVER

### A. TURNING ON AND OFF YOUR SHAVER



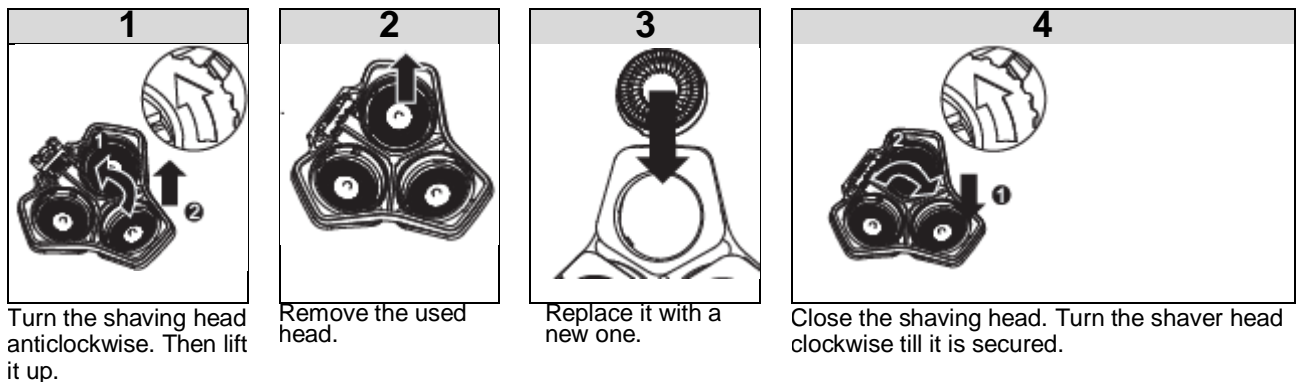
**NOTE:** An adaptation period of 2 or 4 weeks may be necessary to allow the skin to get used to the shaving system of our shaver, and thus to obtain optimal shaving efficiency.



The outer razor blade (dual foil) is thin and refined. When using, **DO NOT** touch your skin too hard with the blade, nor drop the shaver. Your skin may be hurt or the outer blade will be damaged.

## VII. HOW TO REPLACE THE SHAVER HEAD?

- For optimal shaving performance, replace the shaving heads every two years with original ones provided by the manufacturer. The shaver can only be used and be functional with them.



## VII. CLEANING AND MAINTENANCE

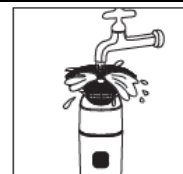
Regular cleaning is recommended to guarantee optimal shaving performance.

**DO NOT CLEAN THE SHAVER WHEN IT IS CHARGING. MAKE SURE IT IS TURNED OFF AND REMOVE THE USB CORD IF IT IS CONNECTED BEFORE CLEANING.**

The shaver is washable and can be cleaned under the tap. **DO NOT** wash the shaver with water hotter than 60°C.

### Shaver head cleaning

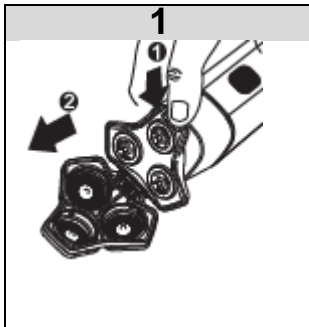
1. Take off the shaver head.



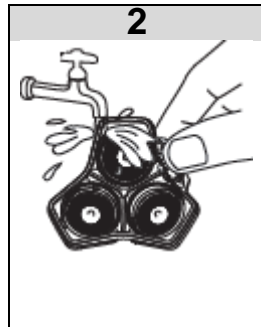
2. Press the release button to open the inner blade before washing the hair chamber and the inner blade.
3. Use the brush to clean the shaver heads and hair chamber after use. If they are too dirty, wash them with hot water(40-60°C).

- Avoid damaging the shaving heads when cleaning.
- Do not dry the shaving heads with the towel or tissue.
- Please note that if there are too many beard crumbs stored in the shaver, their presence may affect the quality of shaving, and the outer blade may not be sharp enough.

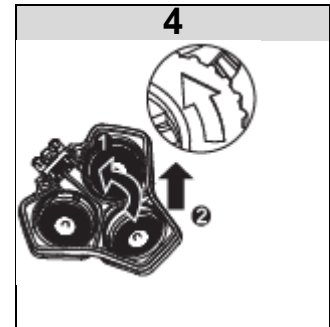
4. For efficient cleaning when needed, use a degreasing liquid (e.g.Alcohol) to clean shaving heads. Then, lubricate the shaving heads with a drop of sewing machine oil after cleaning to prevent wear of them.



Press the button to lift up the shaving head unit. Remove it.



Lubricate with oil.



Close the shaving head. Turn the shaver head clockwise till it is secured.

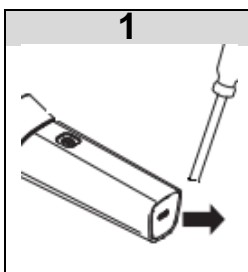
## IX. SAFE INSTRUCTIONS FOR BATTERY

### **ATTENTION :**

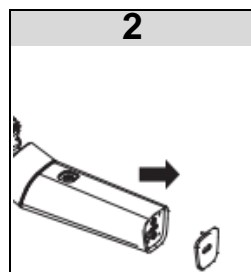
- Before dismantling the battery, you must be sure that turn off the power of appliance without remaining electricity. If there is some, turn on the shaver until the motor stops.
- The battery should not be removed until it is not completely discharged.
- The battery must be removed from the appliance before it is scrapped.
- The appliance must be disconnected from the mains supply when removing the battery. You should unplug the charger and then remove the plug that connects to the shaver.
- Do not plug the shaver after removing the battery.
- The battery must be disposed of safely in the government designated collection places.

### **Procedure to remove the battery**

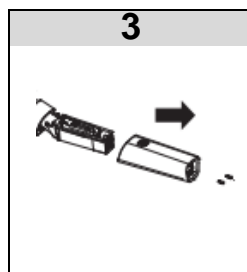
Before starting any operation of the removal of the battery, please read the safety instructions written above and follow them.



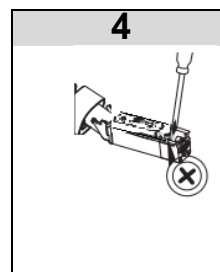
Insert the end of screwdriver in the USB port.



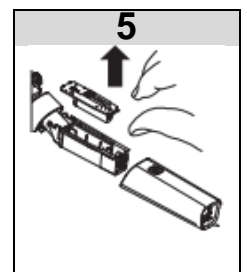
Then pull the bottom panel off the appliance.



Unscrew the 2 screws on the inside of the bottom panel.



Unscrew the screw inside to separate the power unit from the front panel.



Cut the wires close to the batteries and then remove the battery.

**WARNING:** You should not dispose of this device with your household waste. A selective collection system for this type of product is implemented by your local authorities. Please contact your local authorities to find out how and where collection takes place. These restrictions apply because electrical and electronic devices contain dangerous substances that have harmful effects on the environment or on human health and must be recycled.

This symbol indicates that electrical and electronic devices are collected selectively. The symbol shows a waste container crossed out with an X symbol.

If the power cable is damaged, it must be replaced by the manufacturer, his after sales service, or a person qualified in this area in order to avoid any accidents arising.

Imported by EML – trading name Prodis, 1 rue de Rome, 93110 Rosny-sous-Bois, France/  
Made in P.R.C

